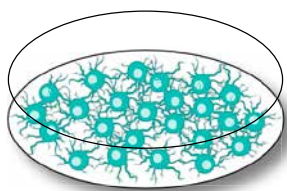


# How to GARD™ your product in six steps

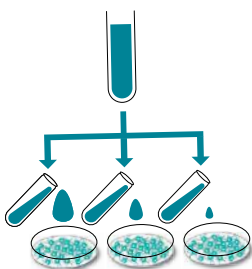


1

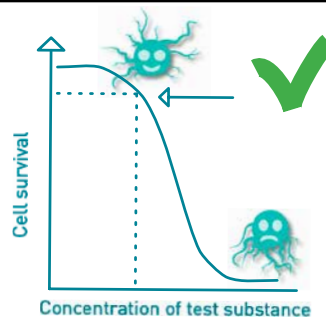
## GARD Input Finder



Grown SenzaCells.



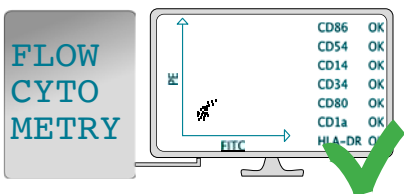
Add different concentrations of the test substance to the cells.



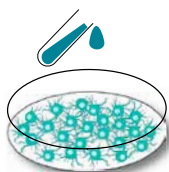
Determine the concentration of the test substance where the cells react and 90% survive.

2

## GARD Main Stimulation



Quality control of the cells.



Expose a fresh batch of quality controlled cells at determined concentration.

3

## RNA Extraction



Extract RNA from the cells.

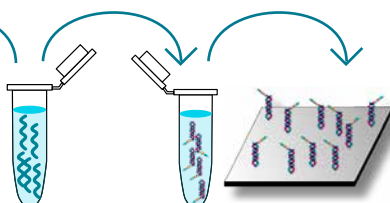
4

## Gene Expression Profiling

NanoString Lab



Check the RNA quality.



Hybridise the isolated RNA with reporter probes and load onto a cassette.



Analyse the cassette to quantify the RNA using NanoString nCounter ⇄⇄ output = gene expression readout.

Could be performed by external CRO

5

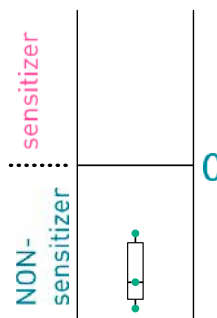
## GARD Data Analysis Application



Upload the gene expression readout to the GDA app. Push the button and the trained model processes the data.

6

## Results



The results are yours!

Dear customer,  
We have determined that your test substance is a non-sensitizer.

Kindly,

