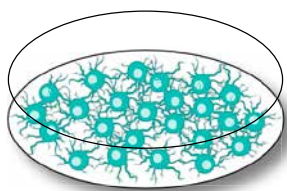


How to GARD™ your product in six steps

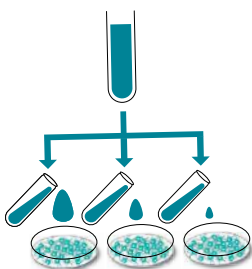


1

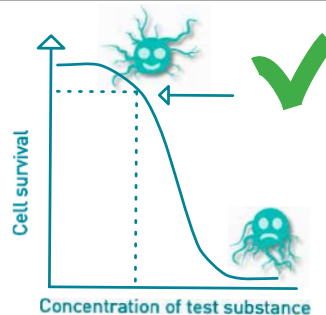
GARD Input Finder



Grown SenzaCells.



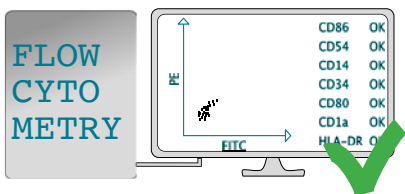
Add different concentrations of the test substance to the cells.



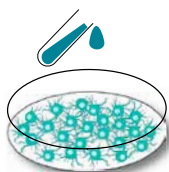
Determine the concentration of the test substance where the cells react and 90% survive.

2

GARD Main Stimulation



Quality control of the cells.



Expose a fresh batch of quality controlled cells at determined concentration.

3

RNA Extraction



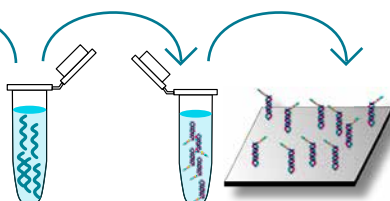
Extract RNA from the cells.

4

Gene Expression Profiling



Check the RNA quality.



Hybridise the isolated RNA with reporter probes and load onto a cassette.



Analyse the cassette to quantify the RNA using NanoString nCounter → output = gene expression readout.

5

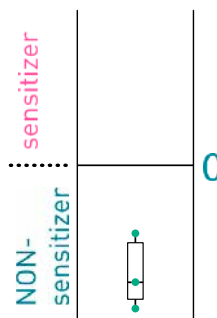
GARD Data Analysis Application



Upload the gene expression readout to the GDA app. Push the button and the trained model processes the data.

6

Results



The results are yours!

Dear customer,
We have determined that your test substance is a non-sensitizer.

Kindly,

SENZAGEN