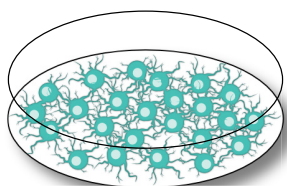


# How to GARD™ your product in six steps

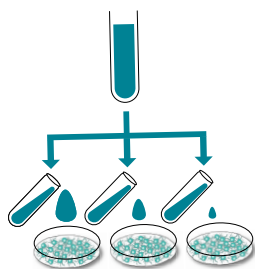


Done in house

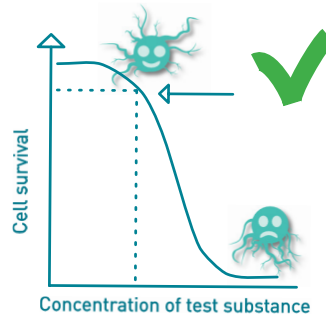
## 1 GARD Input Finder



Grown SenzaCells

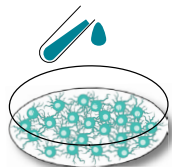


Add different concentrations of the test substance to the cells

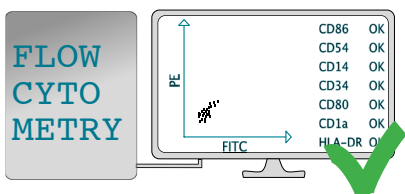


Determine the concentration of the test substance where the cells react and 90% survive

## 2 GARD Main Stimulation



Take test substance at determined concentration and add to fresh batch of cells



Quality control of the cells

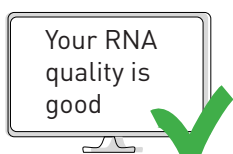
## 3 RNA extraction



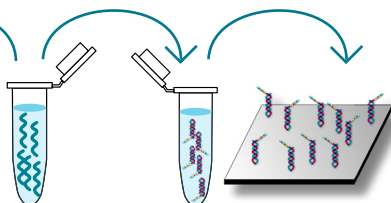
Extract RNA from the cells

Done in house or by CRO

## 4 Gene expression profiling



Check the RNA quality



Mix the isolated RNA with reporter probes and load onto a cassette



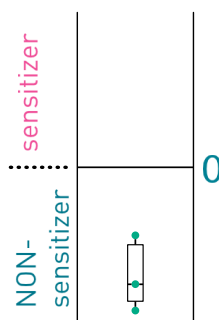
Analyze the probe cassette to quantify the RNA

## 5 GARD data analysis application

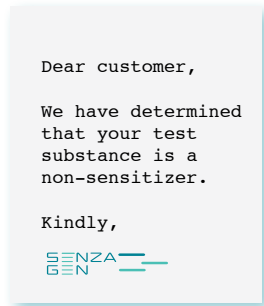


Upload the results to the GDA web app. One press of the button and the algorithm crunches the data

## 6 Results



The results are yours!



Done in house

